

Customer :

customer

Customer part :

customer part

Comment :

Comment

S1=5.5

S2=6.8

Tmax=464

Tp S2=503.0

PI=0.45

HI=108

Sample =1772.30

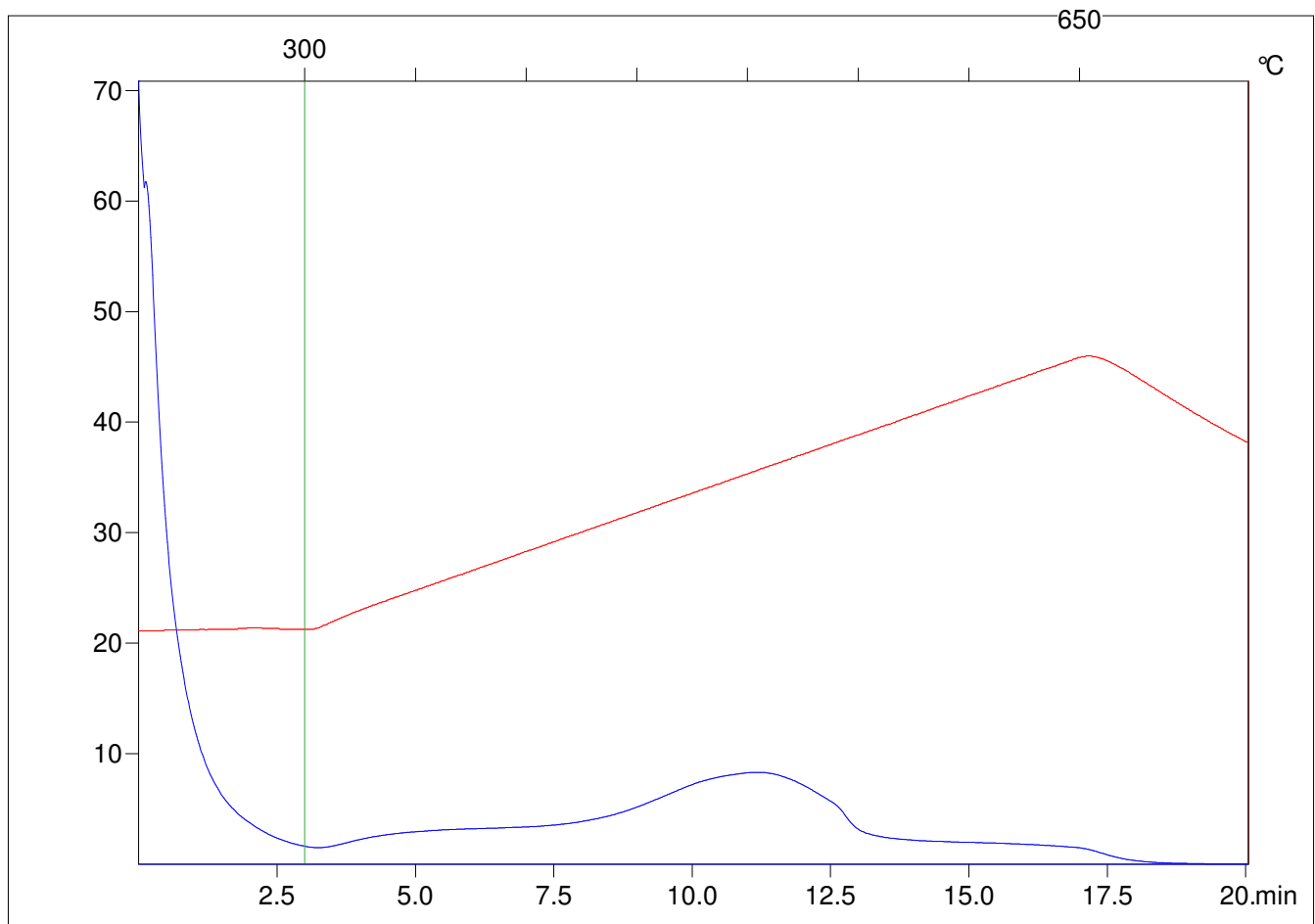
Method =Bulk Rock

Cycle=Basic

KFID(10*9)=1444

Qty =70.3

TOC=6.32



C:\VINC\PK3_1792\PK048.R00 : FID pyrolysis graphic

State

Pyro Status

Oxi Status